

## ONGOING PROJECTS & PROGRAMMES:

### (a) PROJECTS

#### 1. DEVELOPMENT OF GEOSPATIAL WEB APPLICATIONS ON KARNATAKA GEO-PORTAL FOR G-GOVERNANCE (KSSDI) PHASE II PROJECT

Principal Investigator	:	Mr H Hemanth Kumar
Co-Principal Investigators	:	Mr S N Sondur Dr U T Vijay
Budget	:	Rs. 80.36 lakhs
Funded by	:	DST – GOI and DST – GOK
Duration	:	3 years

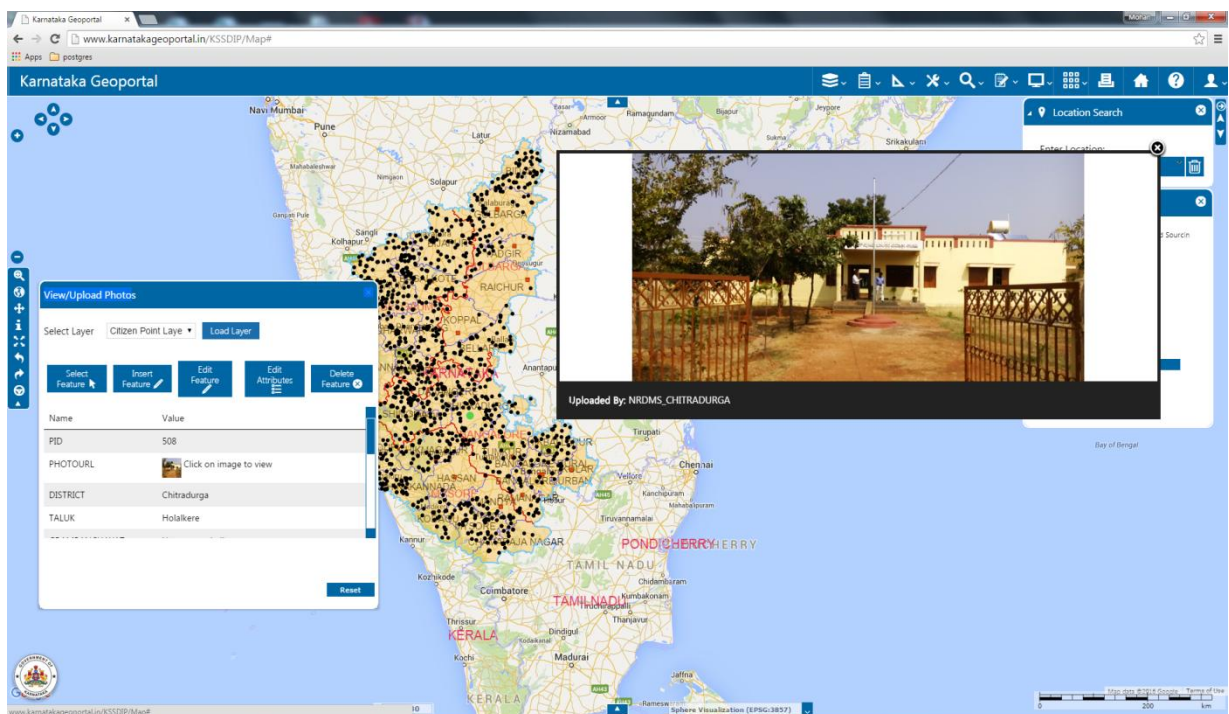
The Council implemented the 2<sup>nd</sup> phase of the project funded by Department of Science and Technology, Government of India and Government of Karnataka. The geoportal now has a web based geospatial applications/decision support system for selected schemes of Watershed and Health Departments to support G-governance on Karnataka Geoportal platform.

On the launch of the above project, a user requirement analysis was taken up to understand and study the geospatial information needs of the KWDD to be accessed over the web. KSCST showcased the utilization of Geospatial Technologies by developing geospatial applications on the Karnataka State Geo-portal to evaluate watersheds in Belagavi Division of Karnataka under the Phase I and Phase II projects of PMKSY. Development and deployment of the “State Geo-portal for Watershed Management” technology enables the users to query on various geo-spatial and non-spatial (attribute) parameters at cadastral/beneficiary level for activities taken up under agriculture/ horticulture/ forestry sectors. The Geo-portal enlists a host of Open Geospatial Consortium (OGC)/ International Standardization Organization (ISO) Standards-based Web Services for accessing data sets to support Watershed Management. Crowd sourcing of data for data updating, mobile (smart phone) compatibility and online editing of data sets are some of the Technology’s major highlights. Some of the screenshots showing the home page and query pages of the State Geo-Portal are shown below:



Accessible on the State Geo-portal, above web-based services could be used by the end users in the field (watersheds) to capture relevant data sets from the watersheds and update the geospatial database at a central server over the web. In this instance, the database is located at KSCST for access by all end users across the Belagavi Division of Karnataka contains the cadastral map layers secured from the Survey Settlement & Land Records (SSLR) Department of the State's Revenue Department. Non-spatial information from the MIS of the Karnataka Watershed Development Department (KWDD) has been integrated with the cadastral (spatial) data layers to facilitate querying and analysis over the hitherto unavailable an integrated database and the Geoweb. Use of the services has been demonstrated to the potential end users in various training workshops in Karnataka and several other States for adoption in State SDI projects of NRDMS-NSDI. The Karnataka District NRDMS Centers in the State have been trained on the use of the State Geo-Portal in Watershed Management.

### Uploading of geo-tagged School data on Karnataka GeoPortal



## Watershed Portlet

### Watershed Portal – Query on Horticulture activities

The screenshot displays the Karnataka Geoportal interface. The main map shows a watershed area with various sub-areas highlighted in orange. The interface includes a search panel on the left, a location search bar on the top right, and a layer list on the right. A data table is visible at the bottom, showing the results of the query.

ID	HSSA	SURVEY_ID	SPL_CODE	BATCH
53	14471	144	2370	1
61	14425	144	2375	1
62	14435	144	2375	1
63	14574	145	2374	1
66	14574	145	2374	1
79	147	147	2380	1
80	147	147	2380	1
81	147	147	2380	1
82	147	147	2380	1
83	147	147	2380	1